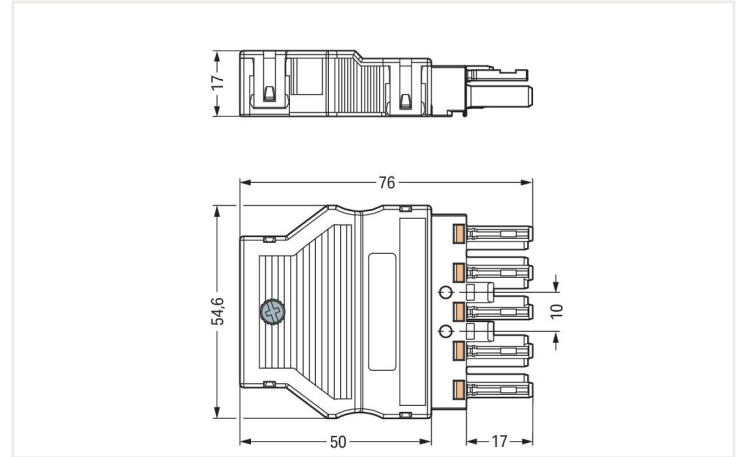
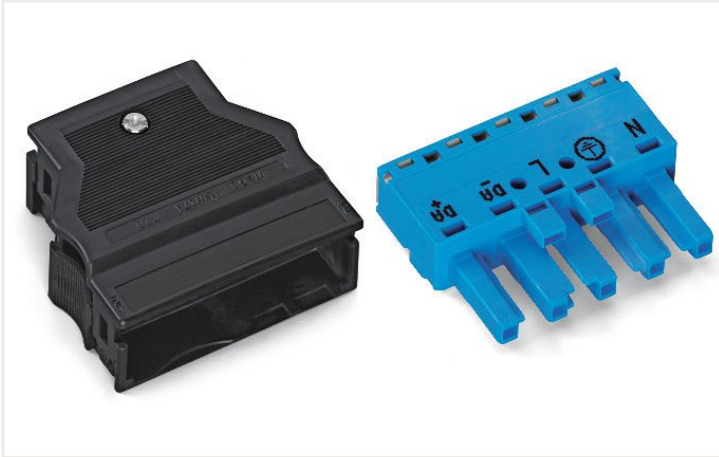


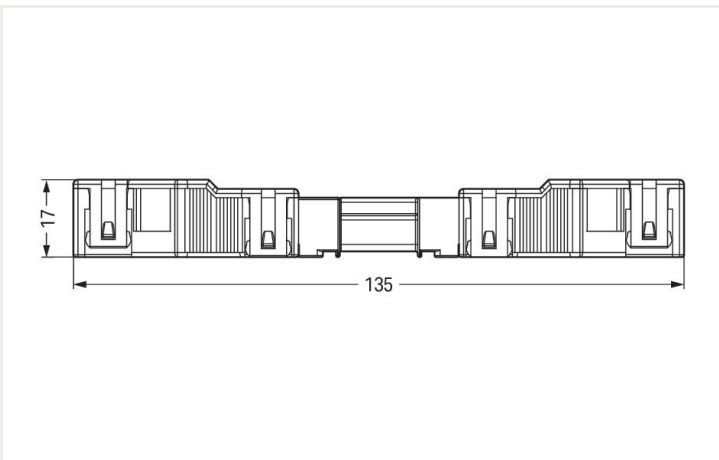
Data sheet | Item number: 770-1105/022-000

Socket; with strain relief housing; 5-pole; Cod. I; 4,00 mm²; blue

<https://www.wago.com/770-1105/022-000>



Dimensions in mm



Dimensions in mm

Overall length when mated

Female connector/socket WINSTA® MIDI with protection against mismatching

The WINSTA® MIDI female connector/socket with protection against mismatching is the pluggable solution for your use in control cabinets, on PCBs or for lighting connections. WAGO pluggable installation connectors are used when specifications repeat or are planned on a defined pattern, for example for installing grid lighting or flush-mount lighting. The coding options reduce installation errors, allowing fast, maintenance-free wiring of all components. The pluggable installation connector offers protection against contact with live components in accordance with protection type IP20 (When mated and secured with a strain relief housing; IP2xC (These compact connectors are not designed for use in open, easily accessible areas!)). Regulated lighting, as implemented in the DALI standard, for instance, is the main application of WINSTA® MIDI pluggable installation connectors with I coding. This pluggable installation connector can be employed for a load of up to 25 A. Therefore, it can also be used for high power loads. WINSTA® MIDI with Push-in CAGE CLAMP® spring pressure connection technology is used in a broad range of individual products you can use for quick, easy, flexible, and secure installation. The strip length is 55 mm.

Lower costs through fast commissioning and elimination of service expenses – solutions from WINSTA® MIDI

The WINSTA® Pluggable Connection System is perfectly tailored to the very strict requirements of building installation. It makes electrical installation pluggable, and therefore faster, more reliable, and error-free. Using this pre-assembled system reduces assembly times and installation errors at the construction site. Choose quality and durability – the WINSTA® MIDI pluggable installation connector with protection against mismatching from WAGO makes the electrical installation of electrical components visibly easier.

- pluggable installation connectors with protection against mismatching
- for automation controllers
- for intelligent, easy lighting installation
- custom-engineered solutions
- quick replacement of defective units during ongoing operation

Item includes



Item no.: 770-505

1

Item no.: 770-1105

1

Strain relief housing; 5-pole; for 2 cables;
9.0 ... 13.0 mm; 55 mm; blackSocket; 5-pole; Cod. I; 4,00 mm²; blue

Electrical data

Ratings per IEC/EN

Ratings per	IEC/EN 60664-1
Nominal voltage (III/3)	400 V
Rated impulse voltage (III/3)	6 kV
Rated current	25 A
Legend (ratings)	(III / 3) \triangleq Overvoltage category III / Pollution degree 3

Ratings per UL

Note for the US market	Some versions may also be used for current interruption in accordance with the UL certificate in select applications with currents below 16 A and voltages up to 600 V. For further information, please contact your local sales office.
Rated voltage (UL 1977)	600 V
Rated current UL 1977	23 A

General

Note on contact resistance	approx. 1 m Ω of contact resistance approx. 0.25 m Ω contact transition plug/ socket
----------------------------	--

Connection data

Total number of connection points	10
Total number of potentials	5

Connection 1

Connection technology	Push-in CAGE CLAMP®
Actuation type	Operating tool Push-in
Nominal cross-section	4 mm ² / 12 AWG
Solid conductor	0.5 ... 4 mm ² / 20 ... 12 AWG
Solid conductor; push-in termination	1.5 ... 4 mm ² / 16 ... 12 AWG
Stranded conductor	0.5 ... 2.5 mm ² / 20 ... 14 AWG
Fine-stranded conductor	0.5 ... 4 mm ² / 20 ... 12 AWG
Fine-stranded conductor; with insulated ferrule	0.25 ... 1.5 mm ² / 20 ... 16 AWG
Fine-stranded conductor; with uninsulated ferrule	0.25 ... 2.5 mm ² / 20 ... 14 AWG
Fine-stranded conductor; with ferrule; push-in termination	1.5 mm ² / 16 AWG
Strip length	9 mm / 0.35 inches
Pole number	5
Connectable sheathed cable diameter	9 ... 13 mm
Conductor entry direction to mating direction	0°
Strip length (outer insulation)	55 mm

Physical data

Pin spacing	10 mm / 0.394 inches
Width	54.6 mm / 2.15 inches
Height	17 mm / 0.669 inches
Depth	75.9 mm / 2.988 inches

Mechanical data

Application	DALI, Lichtmanagement
Coding	I
Variable coding	No
Marking	N ⊕ L DA- DA+
Potential marking	N ⊕ L DA- DA+
Mating force of a plug-in connection	approx. 20 ... 70 N (depending on pole number)
Retention force of a plug-in connection	Locked:
Unmating force of a plug-in connection	Unlocked: approx. 20 ... 70 N (depending on pole number)
Number of mating cycles	200, without resistive load
Protection type	IP20; When mated and secured with a strain relief housing: IP2xC (These compact connectors are not designed for use in open, easily accessible areas!)

Plug-in connection

Contact type (pluggable connector)	Female connector/socket
Connector (connection type)	for conductor
Mismating protection	Yes
Note on mismating protection	All WINSTA® components are 100% protected against mismating when: a.) plugging different numbers of poles b.) plugging while rotated 180 c.) plugging while laterally staggered d.) plugging one pole
Locking lever	Can be retrofitted
Locking of plug-in connection	Locking lever
Note on locking system	All connectors for mounted installations (snap-in versions for lighting fixtures or devices, all types of PCB and distribution connectors) are factory-equipped with locking levers to ensure plugs and sockets are securely locked. Additional locking levers are only required for flying leads (plug/socket).
Strain relief	Strain relief housing

Material data

Note (material data)	Information on material data can be found here
Color	blue
Cover color	gray
Material group	I
Insulation material	Polyamide (PA66)
Flammability class per UL94	V0
Clamping spring material	Chrome-nickel spring steel (CrNi)
Contact material	Copper or copper alloy; surface-treated
Fire load	0.616 MJ
Connector color	blue
Weight	28.9 g

Environmental requirements

Processing temperature	-5 ... +40 °C
Continuous operating temperature	-35 ... +85 °C
Note on continuous operating temperature	Insulating parts for temperatures ≤ 105 °C

Commercial data

eCl@ss 10.0	27-44-06-05
eCl@ss 9.0	27-44-06-05
ETIM 8.0	EC002560
ETIM 7.0	EC002560
PU (SPU)	25 Stück
Packaging type	Box
Country of origin VKOrg Germany	DE
GTIN	4050821223016
Customs tariff number VKOrg Germany	85366990990

Downloads

Environmental Product Compliance

Compliance Search

Environmental Product
Compliance
770-1105/022-000



1 Compatible products

1.1 System counterpart

1.1.1 Cable assembly



Item no.: 771-9985/206-101

pre-assembled connecting cable; Eca;
Plug/open-ended; 5-pole; Cod. I; H05VV-F
5G 1.5 mm²; 1 m; 1,50 mm²; blue



Item no.: 771-9985/006-101

pre-assembled interconnecting cable;
Eca; Socket/plug; 5-pole; Cod. I; H05VV-F
5G 1.5 mm²; 1 m; 1,50 mm²; blue

1.1.2 Distribution box



Item no.: 899-631/313-000

Distribution box; DALI; 1 input; 5 outputs;
Cod. I; MIDI; black

1.1.3 Distribution connector



Item no.: 770-618

3-way distribution connector; 5-pole; Cod. I; 1 input; 3 outputs; blue



Item no.: 770-1947

5-way distribution connector; 5-pole; Cod. I; 1 input; 5 outputs



Item no.: 770-992

h-distribution connector; 5-pole; Cod. I; 1 input; 2 outputs; outputs on both sides; 2 locking levers; blue



Item no.: 770-993

h-distribution connector; 5-pole; Cod. I; 1 input; 2 outputs; outputs on both sides; 3 locking levers; for flying leads; blue



Item no.: 770-7105

Linect® T-connector; 5-pole; Cod. I; 1 input; 2 outputs; blue



Item no.: 770-617

T-distribution connector; 5-pole; Cod. I; 1 input; 2 outputs; 2 locking levers; blue



Item no.: 770-620

T-distribution connector; 5-pole; Cod. I; 1 input; 2 outputs; 3 locking levers; for flying leads; blue

1.1.4 Male connector/plug



Item no.: 770-3115/011-000

Plug for PCBs; angled; 5-pole; Cod. I; blue



Item no.: 770-3115

Plug for PCBs; straight; 5-pole; Cod. I; blue



Item no.: 770-1115

Plug; 5-pole; 4,00 mm²; blue



Item no.: 770-1115/022-000

Plug; with strain relief housing; 5-pole; 4,00 mm²; blue



Item no.: 770-2115

Snap-in plug; 5-pole; Cod. I; 4,00 mm²; blue



Item no.: 770-2115/007-000

Snap-in plug; with direct ground contact; 5-pole; Cod. I; 4,00 mm²; blue

1.2 Required accessories

1.2.1 Locking system

1.2.1.1 Locking system



Item no.: 770-101

Locking lever; for flying leads; for manual operation; black



Item no.: 770-121

Locking lever; for flying leads; for manual operation; white



Item no.: 770-111

Locking lever; for flying leads; for tool operation; black



Item no.: 770-131

Locking lever; for flying leads; for tool operation; white

1.2.2 Strain relief

1.2.2.1 Strain relief housing



Item no.: 770-505/021-000

Strain relief housing; 5-pole; for 1 cable; 11.5 ... 16.5 mm; 71 mm; black



Item no.: 770-515/021-000

Strain relief housing; 5-pole; for 1 cable; 11.5 ... 16.5 mm; 71 mm; white



Item no.: 770-505/023-000

Strain relief housing; 5-pole; for 2 cables; 5.0 ... 9.0 mm; 55 mm; black



Item no.: 770-515/023-000

Strain relief housing; 5-pole; for 2 cables; 5.0 ... 9.0 mm; 55 mm; white



Item no.: 770-505

Strain relief housing; 5-pole; for 2 cables; 9.0 ... 13.0 mm; 55 mm; black



Item no.: 770-515

Strain relief housing; 5-pole; for 2 cables; 9.0 ... 13.0 mm; 55 mm; white

1.3 Optional accessories

1.3.1 Cover

1.3.1.1 Cover



Item no.: 770-201

Lockout cap; 12-pole, separable; for sockets; Plastic; black

Item no.: 770-221

Lockout cap; 12-pole, separable; for sockets; Plastic; white

Item no.: 897-2005

Protective cap; Type4; for sockets and plugs; PVC; red

1.3.2 Marking

1.3.2.1 Marker



Item no.: 770-450/000-006

Marker card; Plastic; blue

Item no.: 770-450/000-001

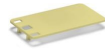
Marker card; Plastic; green

Item no.: 770-450/000-012

Marker card; Plastic; orange

Item no.: 770-450/000-005

Marker card; Plastic; red



Item no.: 770-450

Marker card; Plastic; white

Item no.: 770-450/000-002

Marker card; Plastic; yellow

1.3.3 Tool

1.3.3.1 Operating tool

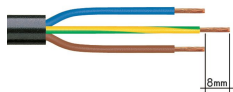


Item no.: 210-719

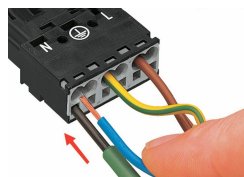
Operating tool; Blade: 2.5 x 0.4 mm; with a partially insulated shaft

Installation notes

Conductor termination



1. Strip length, outer insulation = 35 mm (2-pole), 55 mm (3- to 5-pole)
2. Strip length = 9 mm
3. Extended ground conductor = 8 mm



To terminate fine-stranded conductors, open the clamping unit via screwdriver (2.5 mm blade width) and insert a stripped conductor until it hits the backstop.

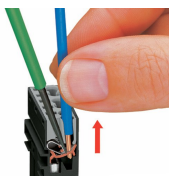


Insert the stripped solid conductor until it hits the backstop.



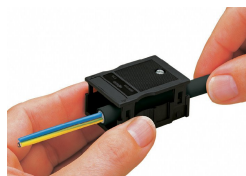
To terminate fine-stranded conductors, open the clamping unit via screwdriver (2.5 mm blade width) and insert a stripped conductor until it hits the backstop.

Conductor removal

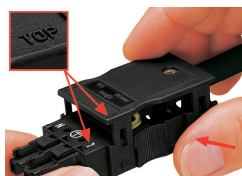


To remove the conductor, actuate the clamp via screwdriver (2.5 mm blade width) and pull out the conductor.

Installation



We recommend pulling the pre-latched strain relief housing over the cable prior to termination. However, the strain relief can be mounted at a later time as well.



Latch the strain relief housing onto the plug/socket. Note the "TOP" inscription.



Prepare strain relief housing by snapping together upper and bottom part.



Tighten strain relief screw with screwdriver (2.5 mm blade width).