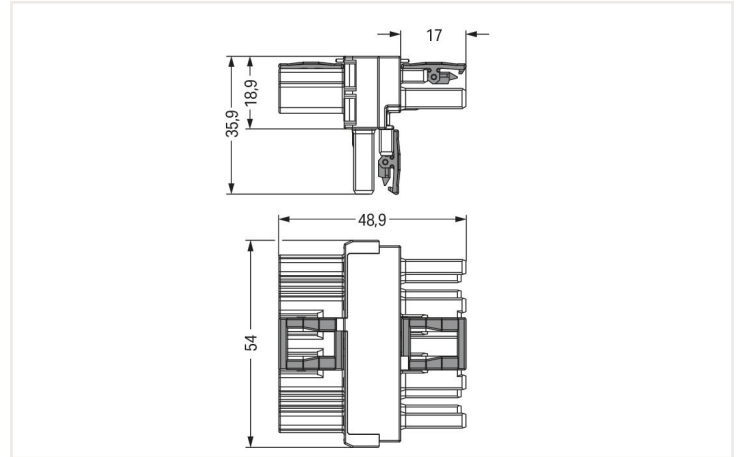
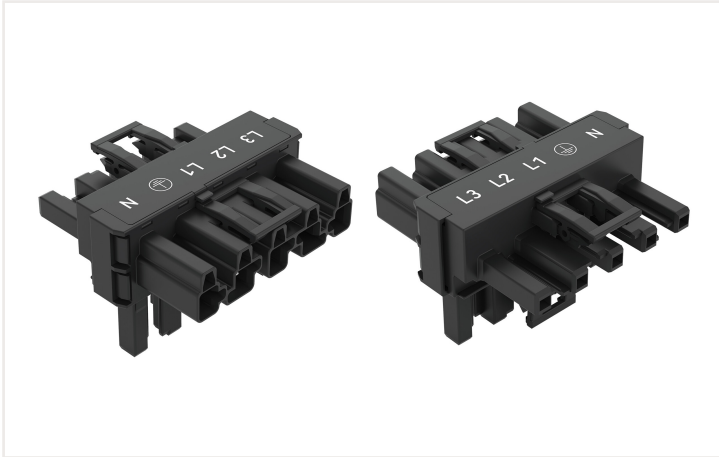


## Data sheet | Item number: 770-622

T-distribution connector; 5-pole; Cod. A; 1 input; 2 outputs; 3 locking levers; for flying leads; black

<https://www.wago.com/770-622>



Dimensions in mm

Distribution connector *WINSTA*® MIDI with protection against mismatching

The *WINSTA*® MIDI distribution connector with protection type IP20 provides the foundation for assembly of solid and fine-stranded conductors. The pluggable installation connectors with spring pressure connection technology work completely without screw connections. They allow fast, efficient, error-free installation in a large number of possible uses. The coding options reduce installation errors, allowing fast, maintenance-free wiring of all components. The pluggable installation connector offers protection against contact with live components in accordance with protection type IP20 (When mated: IP2xC (These compact connectors are not designed for use in open, easily accessible areas!)). Thanks to the color coding and mechanical A coding of *WINSTA*® MIDI pluggable installation connectors, you can clearly distinguish different circuits. This pluggable installation connector is designed for a load of up to 25 A. Therefore, it can also be used for high power loads. *WINSTA*® MIDI with Push-in CAGE CLAMP® spring pressure connection technology is found in a broad range of individual products you can use for quick, easy, flexible, and secure installation.

Lower costs through fast commissioning and elimination of service expenses – solutions from *WINSTA*® MIDI

The *WINSTA*® Pluggable Connection System allows pluggable electrical installation. This significantly reduces the need for servicing and lowers costs. Now you can also reduce installation costs without compromising quality and safety: The *WINSTA*® MIDI pluggable installation connector with protection type IP20 reduces the need for servicing and prevents unnecessary downtime.

- effective protection against mismatching
- pre-assembled versions
- with A coding for a great number of applications
- ready to install and use immediately
- convenient installation and commissioning

### Electrical data

#### Ratings per IEC/EN

Ratings per	IEC/EN 60664-1
Nominal voltage (III/3)	400 V
Rated impulse voltage (III/3)	6 kV
Rated current	25 A
Legend (ratings)	(III / 3) Δ Overvoltage category III / Pollution degree 3

#### Ratings per UL

Note for the US market	Some versions may also be used for current interruption in accordance with the UL certificate in select applications with currents below 16 A and voltages up to 600 V. For further information, please contact your local sales office.
Rated voltage (UL 1977)	600 V
Rated current UL 1977	23 A

### General

Note on contact resistance	approx. 1 mΩ of contact resistance approx. 0.25 mΩ contact transition plug/ socket
----------------------------	--

### Connection data

Total number of potentials	5	<b>Connection 1</b>	
PE function	Preceding PE contact	Pole number	5

### Physical data

Pin spacing	10 mm / 0.394 inches
Width	54 mm / 2.126 inches
Height	35.9 mm / 1.413 inches
Depth	48.9 mm / 1.925 inches

### Mechanical data

Application	General mains applications
Coding	A
Marking	L3 L2 L1 ⊕ N
Potential marking	L3 L2 L1 ⊕ N
Mating force of a plug-in connection	Approx. 20 ... 70 N (depending on pole number)
Retention force of a plug-in connection	When locked:
Unmating force of a plug-in connection	Unlocked: approx. 20 ... 70 N (depending on pole number)
Number of mating cycles	200, without resistive load
Type of distribution box	T-distribution connector
Protection type	IP20; When mated: IP2xC (These compact connectors are not designed for use in open, easily accessible areas!)
Suitable	for flying leads

### Plug-in connection

Mismating protection	Yes
Note on mismating protection	All WINSTA® components are 100% protected against mismating when: a.) plugging different numbers of poles b.) plugging while rotated 180 c.) plugging while laterally staggered d.) plugging one pole
Locking lever	Yes
Locking of plug-in connection	Locking lever
Note on locking system	All connectors for mounted installations (snap-in versions for lighting fixtures or devices, all types of PCB and distribution connectors) are factory-equipped with locking levers to ensure plugs and sockets are securely locked. Additional locking levers are only required for flying leads (plug/socket).
Number of locking levers	3

### Material data

Note (material data)	<a href="#">Information on material data can be found here</a>
Color	black
Insulation material	Polyamide (PA66)
Flammability class per UL94	V0
Contact material	Copper or copper alloy; surface-treated
Fire load	0.49 MJ
Weight	23.7 g

### Environmental requirements

Processing temperature	-5 ... +40 °C
Continuous operating temperature	-35 ... +85 °C
Note on continuous operating temperature	Insulating parts for temperatures ≤ 105 °C

### Commercial data

eCl@ss 10.0	27-44-06-03
eCl@ss 9.0	27-44-06-03
ETIM 8.0	EC002567
ETIM 7.0	EC002567
PU (SPU)	50 Stück
Packaging type	Box
Country of origin VKOrg Germany	DE
GTIN	4044918935050
Customs tariff number VKOrg Germany	85366990990

### Approvals and certificates

#### Country specific Approvals



Approval	Standard	Certificate name
CCA DEKRA Certification B.V.	EN 61535	2173495.02
CCA DEKRA Certification B.V.	IEC 61535	NL-32105

#### Ship Approvals



Approval	Standard	Certificate name
ABS American Bureau of Ship- ping	-	19-HG1868589-PDA
DNV GL Det Norske Veritas, Ger- manischer Lloyd	-	TAE00001Z6
LR Lloyds Register	IEC 61984	02/20050 (E6)

#### UL-Approvals



Approval	Standard	Certificate name
cURus Underwriters Laboratories Inc.	UL 1977	E45171

## Downloads

### Environmental Product Compliance

#### Compliance Search

Environmental Product Compliance 770-622



## Documentation

### Bid Text

770-622	12.03.2015	doc 23.00 KB	
---------	------------	-----------------	--

770-622	19.02.2019	xml 2.81 KB	
---------	------------	----------------	--

ausschreiben.de 770-622			
----------------------------	--	--	--

## CAD/CAE-Data

### CAD data

2D/3D Models 770-622



### CAE data

EPLAN Data Portal  
770-622



WSCAD Universe  
770-622



ZUKEN Portal 770-622



## 1 Compatible products

### 1.1 System counterpart

#### 1.1.1 Cable assembly



**Item no.: [771-9995/206-101](#)**

pre-assembled connecting cable; Eca; Plug/open-ended; 5-pole; Cod. A; H05VV-F 5G 1.5 mm<sup>2</sup>; 1 m; 1,50 mm<sup>2</sup>; black

**Item no.: [771-9995/106-101](#)**

pre-assembled connecting cable; Eca; Socket/open-ended; 5-pole; Cod. A; H05VV-F 5G 1.5 mm<sup>2</sup>; 1 m; 1,50 mm<sup>2</sup>; black

**Item no.: [771-9995/006-101](#)**

pre-assembled interconnecting cable; Eca; Socket/plug; 5-pole; Cod. A; H05VV-F 5G 1.5 mm<sup>2</sup>; 1 m; 1,50 mm<sup>2</sup>; black

#### 1.1.2 Female connector/socket



**Item no.: [770-205](#)**

Socket; 5-pole; Cod. A; 4,00 mm<sup>2</sup>; black

**Item no.: [770-405](#)**

Socket; 5-pole; Cod. A; 4,00 mm<sup>2</sup>; black

**Item no.: [770-105](#)**

Socket; with strain relief housing; 5-pole; Cod. A; 4,00 mm<sup>2</sup>; black

**Item no.: [770-305](#)**

Socket; with strain relief housing; 5-pole; Cod. A; 4,00 mm<sup>2</sup>; black

### 1.1.3 Male connector/plug



**Item no.: 770-215**

Plug; 5-pole; 4,00 mm<sup>2</sup>; black



**Item no.: 770-415**

Plug; 5-pole; 4,00 mm<sup>2</sup>; black



**Item no.: 770-115**

Plug; with strain relief housing; 5-pole; 4,00 mm<sup>2</sup>; black



**Item no.: 770-315**

Plug; with strain relief housing; 5-pole; 4,00 mm<sup>2</sup>; black

## 1.2 Optional accessories

### 1.2.1 Cover

#### 1.2.1.1 Cover



**Item no.: 770-201**

Lockout cap; 12-pole, separable; for sockets; Plastic; black



**Item no.: 770-221**

Lockout cap; 12-pole, separable; for sockets; Plastic; white



**Item no.: 770-360**

Lockout cap; for plugs; 5-pole; separable; yellow

### 1.2.2 Installation

#### 1.2.2.1 Mounting accessories

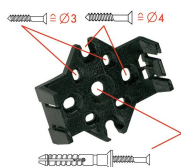


**Item no.: 770-354**

Mounting plate; 2- to 5-pole; for distribution connectors; silver-colored

## Installation notes

### Installation



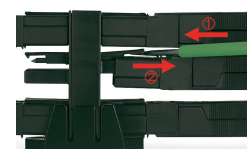
Mounting plates can be secured using commercially available screws or nail-drive anchors.



The distribution connectors snap together when attached to the mounting plate.



To release the distribution connector, unlock the latch using a screwdriver.



All distribution connector connections are locked and protected against accidental disconnection directly after mating. Locking of any connection is released using a screwdriver, even if all connections are used.