

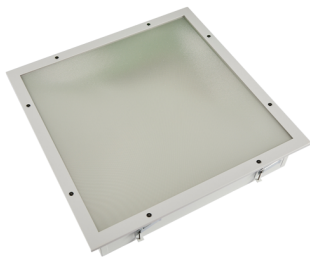


<b>Category</b>	Commercial Panels
<b>Application</b>	Ancillary, Commercial, Education, Healthcare, Industrial
<b>Specification</b>	Performance

# Defender

Defender CCT Multi Wattage IP65 Panel

Code: ADELED



## PRODUCT FEATURES

- Backlit clean air LED panel suitable for education, commercial and healthcare applications
- Selectable CCT between 4000K and 6500K output
- Powered by Tridonic
- High quality steel housing with welded frame and secured by Easy Fix style brackets
- Frame fitted with TP(a) rated diffuser providing excellent diffusion and outstanding light transmission

### GENERAL INFORMATION

<b>Wattage</b>	20W - 33W
<b>Lumens Delivered</b>	2800lm - 4500lm (4000K )
<b>Lm/W</b>	141lm/w - 135lm/W (4000K)
<b>Beam Angle</b>	110
<b>CRI</b>	80
<b>CCT</b>	4000/6500K
<b>Input</b>	220-240V
<b>Operating Temp</b>	-20°C - 50°C
<b>SDCM</b>	3
<b>UGR</b>	17
<b>Cut-Out Size</b>	577x577mm Max Depth 70mm
<b>Product Weight without Packaging</b>	7.76 kg

### TECHNICAL INFORMATION

<b>Light Source</b>	LED
<b>Colour / Finish</b>	White
<b>IP Rating</b>	IP65
<b>IK Rating</b>	IK07
<b>Class Protection</b>	1
<b>Internal / External</b>	Internal
<b>Surface / Recessed / Suspended</b>	Recessed
<b>Lumen Depreciation</b>	L70 80,000h
<b>Warranty (Years)</b>	5
<b>CE Mark</b>	Yes
<b>Height</b>	115 mm





<b>Category</b>	Commercial Panels
<b>Application</b>	Ancillary, Commercial, Education, Healthcare, Industrial
<b>Specification</b>	Performance

# Defender

Defender CCT Multi Wattage IP65 Panel  
Code: ADELED

