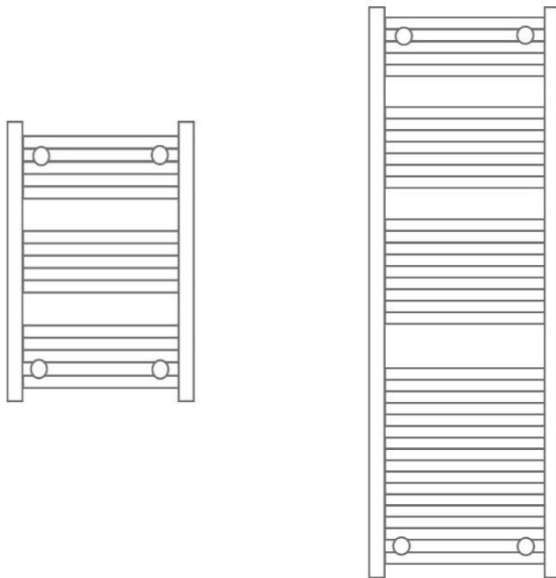




Product Instruction Manual

AQUILO



AQ250LS & AQ400LS

Ladder Style Tower Rail

Thank you for purchasing a Hyco Aquilo Straight Ladder Style Towel Rail. Please ensure you read and understand these instructions to ensure safe installation and operation.

The Aquilo is a stylish and modern straight, ladder style towel rail in high quality chrome finish. The modern, slimline profile will compliment a variety of bathroom applications and is a robust, durable choice. For use in bathrooms to provide warm dry towels.

Key features

- Slimline straight profile
- High quality chrome finish
- Easy to install

1. Important safety points



Electrical installation must be carried out by a qualified electrician in accordance with the latest edition of the IEE wiring regulations.



This appliance can be used by children aged from 8 years and above and persons with reduced physical, sensory or mental capabilities or lack of experience and knowledge if they have been given supervision or instruction concerning use of the appliance in a safe way and understand the hazards involved.



Children shall not play with the appliance. Cleaning and user maintenance shall not be made by children without supervision.



Caution – Some parts of this product can become very hot and cause burns. Attention should be given where children and vulnerable people are present.



If the supply cord is damaged it must be replaced by the manufacturer, its service agent or similarly qualified person.



The appliance is filled with precise quantity of special liquid. Do not attempt fill or empty the unit.



Do not use in environments less than 0⁰ C or more than 40⁰ C.

2. Installation



Do not proceed with installation if there is any sign of damage to the product.



In order to avoid hazard for the very young, this appliance should be installed so that the lowest heated rail is at least 600mm above the floor.

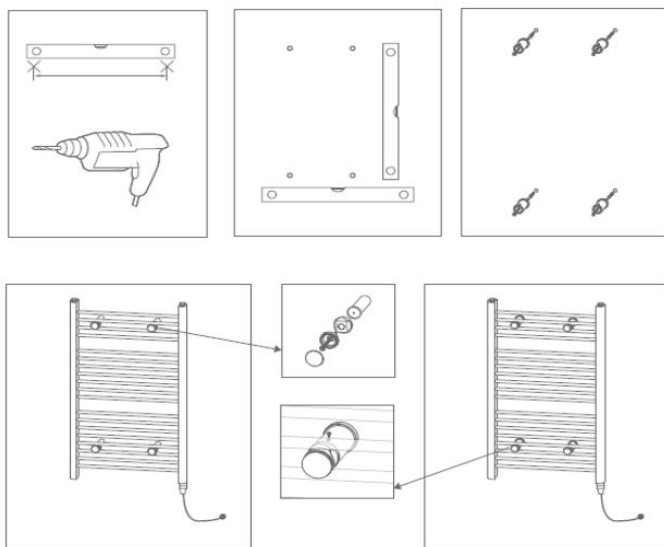


Ensure there are no hidden cables or pipes before commencing drilling any surface.



The power cord **MUST** exit the bottom of the towel rail, do not install upside down.

- Select a mounting surface that is suitable for the weight of the product (see section 5 Specification table).
- Decide the distance between the mounting bracket positions vertically and horizontally. Ensure that the brackets are spaced sufficiently to provide a safe stable fit to the wall, also consider the horizontal centres to allow towels to slide freely down the back of the rails.



3. Electrical connection




The product should only be connected to a supply that meets the specifications detailed on the rating label.



The appliance must be earthed.

- Connection should be made to the fixed wiring of the property via a double pole switched fused spur.
- Electrical connections should be made as follows:

Green/Yellow earth wire to the terminal marked "E" or 

Brown/Red live wire to the terminal marked "L"

Blue/Black neutral wire to the terminal marked "N"

4. Maintenance

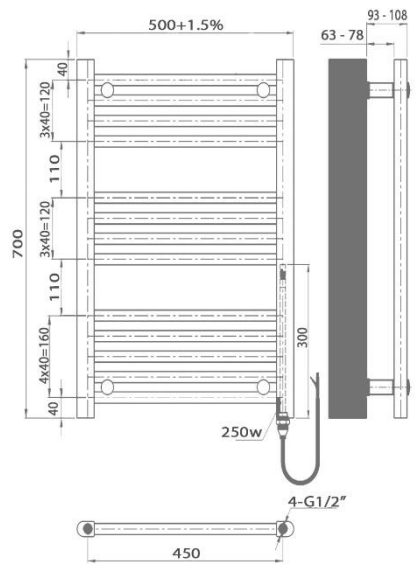
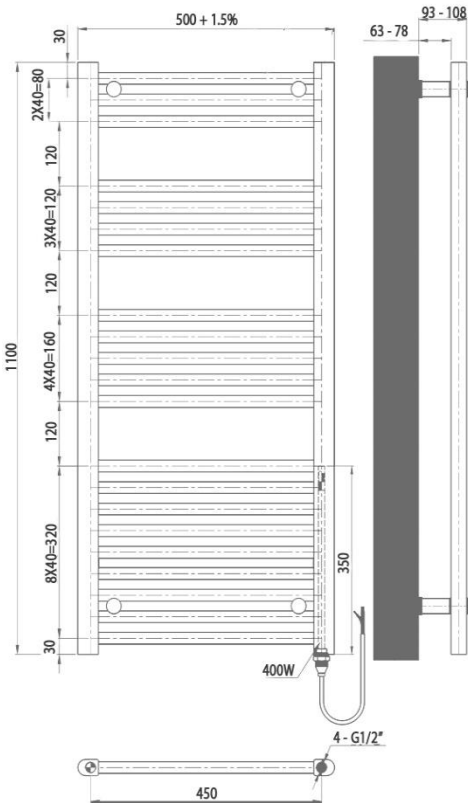


Always disconnect the electrical power supply before commencing maintenance.

- The surface of the appliance should be wiped clean with a soft cloth and soapy water. **Do not use abrasive chemicals or cloths as damage may result.**

5. Specification

	AQ250LS	AQ400LS
Voltage	AC 220-240V	AC 220-240V
Frequency	50Hz	50Hz
Power	0.25 kW	0.40 kW
Ingress Protection	IPX4	IPX4
Weight	8.5kg	13.5kg



6. Guarantee and service policy

This product is covered by a standard parts or replacement warranty for a period of three years from the date of purchase.

If there is a manufacturing defect within the warranty period we will send spare parts, repair and return the unit or, at our discretion, supply a replacement product.

Incorrect installation and failure to follow correct operating instructions are excluded. Consequential costs such as labour charges or damage to surroundings are expressly excluded.

Contact us

If you experience a problem with this product you should first contact our service department on 01924 225 200 before taking any further action.

Experience has shown that issues can often be resolved without the need to return or uninstall the product.



INFORMATION FOR CORRECT DISPOSAL OF THE PRODUCT IN ACCORDANCE WITH THE EUROPEAN DIRECTIVE 2002/96/E.

At the end of its working life this equipment must not be disposed of as household waste. It must be taken to a local authority waste collection centre or to a dealer providing this service. Disposing of electrical and electronic equipment separately enables its components to be recovered and recycled to obtain significant savings in energy and resources. In order to underline the duty to dispose of this equipment separately, the product is marked with a crossed-out dustbin.

Hycos Manufacturing Ltd
Normandy Court
Express Way
Castleford, WF10 5NR

T 01924 225 200
F 01924 225 210
E sales@hycos.co.uk

hycos.co.uk