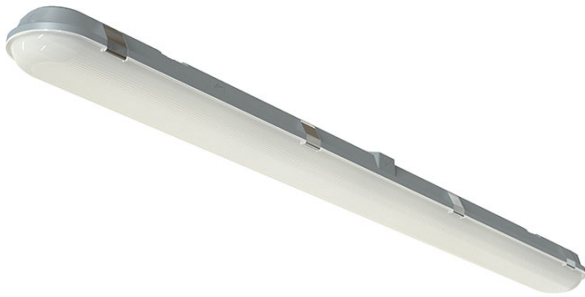




## ATORPLED2X5/MWS/M3

Tornado Pro Twin 1.5m 61W Integral Microwave Sensor Self-Test Emergency



## Features

Robust non-corrosive batten ideal for industrial applications and ancillary areas

Ultra slim IP65 LED NCF linear

High efficiency up to 161 Lm/W

Unique base design caters for multiple installation methods

Installer friendly embedded features aid accurate and fast installation for any application

Quick release LED array / gear tray assembly provides the installer the means to faster installation / maintenance

Fast latching / permanently located stainless steel side clips ensure a quick and secure connection

Self-test emergency as standard with Li-ion battery technology, reducing charge time and running costs

Powered by Tridonic

## General Information

<b>Lamp Type</b>	LED
<b>Emergency</b>	Yes
<b>Self Test</b>	Yes
<b>Integral Microwave Sensor</b>	Yes
<b>IP Rating</b>	IP65
<b>IK Rating</b>	IK07
<b>Class Protection</b>	1
<b>Internal / External</b>	Internal/External
<b>Surface / Recessed / Suspended</b>	Surface/Suspended
<b>Lifetime (Hrs)</b>	L80 54,000
<b>Warranty (Years)</b>	7
<b>CE Mark</b>	Yes
<b>Length (mm)</b>	1565
<b>Width (mm)</b>	115
<b>Height (mm)</b>	70
<b>Accessories</b>	ATORPLED/SSKIT/SINGLE, ATORPLED/SSKIT/TWIN

## Technical Information

Wattage	61W
Lumens Delivered	6310lm
Lm/W	103lm
CRI	Ra 80
CCT	4000K
Input	230V
Hertz	50Hz
Operating Temp	-10°C to 40°C
SDCM	6

