

Technical Specification

Product Code: CL20401B

Description: 1 Gang GridPro® Frontplate & Back Box



**General Information**

<b>Dimensions (mm)</b>	80 (W) x 80 (H) x 42 (D)
<b>Plate Fixing Centres - Horizontal (mm)</b>	60.3
<b>Style</b>	Metal Clad
<b>Finish</b>	Metal Clad Grey
<b>Materials</b>	Front Plate & Pattress Box: Electrophoretically Coated Steel
<b>Anti Microbial Certified</b>	No
<b>Yoke Required</b>	No
<b>Supplied Back Box Depth (mm)</b>	40
<b>Back Box Knockouts - Total (mm)</b>	None
<b>Ingress Protection</b>	IP20
<b>Operational Temperature (°C)</b>	-5 to +40
<b>Warranty (Years)</b>	10

**Standards** BS 5733

**Additional Information** Ensure that the mains supply is isolated before commencing installation and refer to the circuit diagram with the relevant product.  
Bare earth cables must always be covered with appropriate sleeving and wired to the earth terminal.



**Technical Specification**

**Product Code:** CL20402

**Description:** 2 Gang GridPro® Frontplate & Back Box



**General Information**

<b>Dimensions (mm)</b>	80 (W) x 80 (H) x 42 (D)		
<b>Plate Fixing Centres - Horizontal (mm)</b>	60.3		
<b>Style</b>	Metal Clad		
<b>Finish</b>	Metal Clad Grey		
<b>Materials</b>	Front Plate & Pattress Box:	Insert: Urea	
	Electrophoretically Coated Steel		
	Fixing Lugs: Brass		
<b>Anti Microbial Certified</b>	No		
<b>Yoke Required</b>	No		
<b>Supplied Back Box Depth (mm)</b>	40		
<b>Back Box Knockouts - Total (mm)</b>	5 x Ø20		
<b>Back Box Knockouts - Top (mm)</b>	2 x Ø20		<b>Back Box Knockouts - Sides (mm)</b> 1 x Ø20
<b>Back Box Knockouts - Bottom (mm)</b>	1 x Ø20		
<b>Ingress Protection</b>	IP20		
<b>Operational Temperature (°C)</b>	-5 to +40		
<b>Warranty (Years)</b>	10		

**Standards** BS 5733

**Additional Information** Ensure that the mains supply is isolated before commencing installation and refer to the circuit diagram with the relevant product.  
Bare earth cables must always be covered with appropriate sleeving and wired to the earth terminal.



Technical Specification

Product Code: CL20403

Description: 3 Gang GridPro® Frontplate & Back Box



**General Information**

<b>Dimensions (mm)</b>	140 (W) x 80 (H) x 42 (D)		
<b>Plate Fixing Centres - Horizontal (mm)</b>	120.6		
<b>Style</b>	Metal Clad		
<b>Finish</b>	Metal Clad Grey		
<b>Materials</b>	Front Plate & Pattress Box:	Electrophoretically Coated Steel	Insert: Urea
	Fixing Lugs:	Brass	
<b>Anti Microbial Certified</b>	No		
<b>Yoke Required</b>	No		
<b>Supplied Back Box Depth (mm)</b>	40		
<b>Back Box Knockouts - Total (mm)</b>	5 x Ø20		
<b>Back Box Knockouts - Top (mm)</b>	2 x Ø20	<b>Back Box Knockouts - Sides (mm)</b>	1 x Ø20
<b>Back Box Knockouts - Bottom (mm)</b>	1 x Ø20		
<b>Ingress Protection</b>	IP20		
<b>Operational Temperature (°C)</b>	-5 to +40		
<b>Warranty (Years)</b>	10		

**Standards** BS 5733

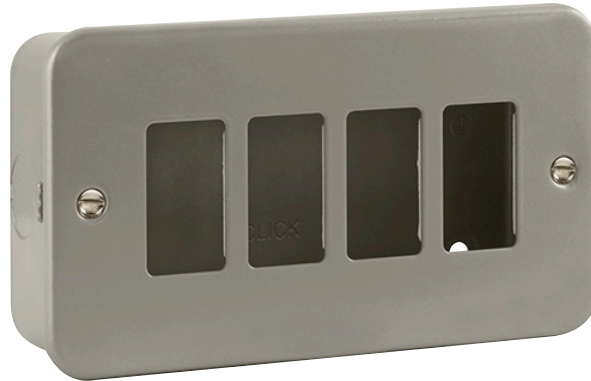
**Additional Information** Ensure that the mains supply is isolated before commencing installation and refer to the circuit diagram with the relevant product.  
Bare earth cables must always be covered with appropriate sleeving and wired to the earth terminal.



**Technical Specification**

**Product Code:** CL20404

**Description:** 4 Gang GridPro® Frontplate & Back Box



**General Information**

<b>Dimensions (mm)</b>	140 (W) x 80 (H) x 42 (D)		
<b>Plate Fixing Centres - Horizontal (mm)</b>	120.6		
<b>Style</b>	Metal Clad		
<b>Finish</b>	Metal Clad Grey		
<b>Materials</b>	Front Plate & Pattress Box:	Insert: Urea	
	Electrophoretically Coated Steel		
	Fixing Lugs: Brass		
<b>Anti Microbial Certified</b>	No		
<b>Yoke Required</b>	No		
<b>Supplied Back Box Depth (mm)</b>	40		
<b>Back Box Knockouts - Total (mm)</b>	7 x Ø20		
<b>Back Box Knockouts - Top (mm)</b>	3 x Ø20	<b>Back Box Knockouts - Sides (mm)</b>	1 x Ø20
<b>Back Box Knockouts - Bottom (mm)</b>	2 x Ø20		
<b>Ingress Protection</b>	IP20		
<b>Operational Temperature (°C)</b>	-5 to +40		
<b>Warranty (Years)</b>	10		

**Standards** BS 5733

**Additional Information** Ensure that the mains supply is isolated before commencing installation and refer to the circuit diagram with the relevant product.  
Bare earth cables must always be covered with appropriate sleeving and wired to the earth terminal.



**Technical Specification**

**Product Code:** CL20506

**Description:** 6 Gang GridPro® Frontplate & Back Box



**General Information**

<b>Dimensions (mm)</b>	146 (W) x 146 (H) x 42 (D)	
<b>Style</b>	Metal Clad	
<b>Finish</b>	Metal Clad Grey	
<b>Materials</b>	Front Plate & Pattress Box: Electrophoretically Coated Steel	
<b>Anti Microbial Certified</b>	No	
<b>Yoke Required</b>	Yes (2 x GR20400)	
<b>Supplied Back Box Depth (mm)</b>	40	
<b>Back Box Knockouts - Total (mm)</b>	8 x Ø20, 1 x 67 x 32	
<b>Back Box Knockouts - Top (mm)</b>	3 x Ø20	<b>Back Box Knockouts - Sides (mm)</b> 1 x Ø20
<b>Back Box Knockouts - Bottom (mm)</b>	3 x Ø20	<b>Back Box Knockouts - Rear (mm)</b> 1 x 67 x 32
<b>Ingress Protection</b>	IP20	
<b>Operational Temperature (°C)</b>	-5 to +40	
<b>Warranty (Years)</b>	10	

**Standards** BS 5733

**Additional Information** Ensure that the mains supply is isolated before commencing installation and refer to the circuit diagram with the relevant product.  
Bare earth cables must always be covered with appropriate sleeving and wired to the earth terminal.

**Additional Accessories** CL089: 50mm Back Box  
CL089B: 50mm Back Box Without Knockouts



**Technical Specification**

**Product Code:** CL20508

**Description:** 8 Gang GridPro® Frontplate & Back Box



**General Information**

<b>Dimensions (mm)</b>	146 (W) x 146 (H) x 42 (D)		
<b>Style</b>	Metal Clad		
<b>Finish</b>	Metal Clad Grey		
<b>Materials</b>	Front Plate & Pattern Box: Electrophoretically Coated Steel		
<b>Anti Microbial Certified</b>	No		
<b>Yoke Required</b>	Yes (2 x GR20400)		
<b>Supplied Back Box Depth (mm)</b>	40		
<b>Back Box Knockouts - Total (mm)</b>	8 x Ø20, 1 x 67 x 32		
<b>Back Box Knockouts - Top (mm)</b>	3 x Ø20	<b>Back Box Knockouts - Sides (mm)</b>	1 x Ø20
<b>Back Box Knockouts - Bottom (mm)</b>	3 x Ø20	<b>Back Box Knockouts - Rear (mm)</b>	1 x 67 x 32
<b>Ingress Protection</b>	IP20		
<b>Operational Temperature (°C)</b>	-5 to +40		
<b>Warranty (Years)</b>	10		

**Standards** BS 5733

**Additional Information** Ensure that the mains supply is isolated before commencing installation and refer to the circuit diagram with the relevant product.  
Bare earth cables must always be covered with appropriate sleeving and wired to the earth terminal.

**Additional Accessories** CL089: 50mm Back Box  
CL089B: 50mm Back Box Without Knockouts



Technical Specification

Product Code: CL20509B

Description: 9 Gang GridPro® Frontplate & Back Box



**General Information**

<b>Dimensions (mm)</b>	146 (W) x 207 (H) x 42 (D)
<b>Style</b>	Metal Clad
<b>Finish</b>	Metal Clad Grey
<b>Materials</b>	Front Plate & Pattress Box: Electrophoretically Coated Steel
<b>Anti Microbial Certified</b>	No
<b>Yoke Required</b>	Yes (3 x GR20400)
<b>Supplied Back Box Depth (mm)</b>	40
<b>Back Box Knockouts - Total (mm)</b>	None
<b>Ingress Protection</b>	IP20
<b>Operational Temperature (°C)</b>	-5 to +40
<b>Warranty (Years)</b>	10

**Standards** BS 5733

**Additional Information** Ensure that the mains supply is isolated before commencing installation and refer to the circuit diagram with the relevant product.  
Bare earth cables must always be covered with appropriate sleeving and wired to the earth terminal.

**Additional Accessories** CL090: 50mm Deep Back Box Without Knockouts  
CL090B: 50mm Deep Back Box Without Knockouts



**Technical Specification**

**Product Code:** CL20512B

**Description:** 12 Gang GridPro® Frontplate & Back Box



**General Information**

<b>Dimensions (mm)</b>	146 (W) x 207 (H) x 42 (D)
<b>Style</b>	Metal Clad
<b>Finish</b>	Metal Clad Grey
<b>Materials</b>	Front Plate & Pattress Box: Electrophoretically Coated Steel
<b>Anti Microbial Certified</b>	No
<b>Yoke Required</b>	Yes (3 x GR20400)
<b>Supplied Back Box Depth (mm)</b>	40
<b>Back Box Knockouts - Total (mm)</b>	None
<b>Ingress Protection</b>	IP20
<b>Operational Temperature (°C)</b>	-5 to +40
<b>Warranty (Years)</b>	10

**Standards** BS 5733

**Additional Information** Ensure that the mains supply is isolated before commencing installation and refer to the circuit diagram with the relevant product.  
Bare earth cables must always be covered with appropriate sleeving and wired to the earth terminal.

**Additional Accessories** CL090: 50mm Deep Back Box Without Knockouts  
CL090B: 50mm Deep Back Box Without Knockouts





Technical Specification

Product Code: CL20518B

Description: 18 Gang GridPro® Frontplate & Back Box



**General Information**

<b>Dimensions (mm)</b>	196 (W) x 206 (H) x 58 (D)
<b>Style</b>	Metal Clad
<b>Finish</b>	Metal Clad Grey
<b>Materials</b>	Front Plate & Pattress Box: Electrophoretically Coated Steel
<b>Anti Microbial Certified</b>	No
<b>Yoke Required</b>	Yes (3 x GR20600)
<b>Supplied Back Box Depth (mm)</b>	56
<b>Back Box Knockouts - Total (mm)</b>	None
<b>Ingress Protection</b>	IP20
<b>Operational Temperature (°C)</b>	-5 to +40
<b>Warranty (Years)</b>	10

**Standards** BS 5733

**Additional Information** Ensure that the mains supply is isolated before commencing installation and refer to the circuit diagram with the relevant product.  
Bare earth cables must always be covered with appropriate sleeving and wired to the earth terminal.



Technical Specification

Product Code: CL20524

Description: 24 Gang GridPro® Frontplate & Back Box



**General Information**

<b>Dimensions (mm)</b>	196 (W) x 268 (H) x 58 (D)		
<b>Style</b>	Metal Clad		
<b>Finish</b>	Metal Clad Grey		
<b>Materials</b>	Front Plate & Pattress Box: Electrophoretically Coated Steel		
<b>Anti Microbial Certified</b>	No		
<b>Yoke Required</b>	Yes (4 x GR20600)		
<b>Supplied Back Box Depth (mm)</b>	56		
<b>Back Box Knockouts - Total (mm)</b>	6 x Ø20, 6 x Ø25, 1 x 102 x 50		
<b>Back Box Knockouts - Top (mm)</b>	3 x Ø20	<b>Back Box Knockouts - Sides (mm)</b>	3 x Ø20 (L), 3 x Ø25 (R)
<b>Back Box Knockouts - Bottom (mm)</b>	3 x Ø25	<b>Back Box Knockouts - Rear (mm)</b>	1 x 102 x 50
<b>Ingress Protection</b>	IP20		
<b>Operational Temperature (°C)</b>	-5 to +40		
<b>Warranty (Years)</b>	10		

**Standards** BS 5733

**Additional Information** Ensure that the mains supply is isolated before commencing installation and refer to the circuit diagram with the relevant product.  
Bare earth cables must always be covered with appropriate sleeving and wired to the earth terminal.

