

Domestic Ventilation



A iCON

- Stylish ventilation for toilets, bathrooms and kitchens.
- Tailor the fan to the installation requirements with the unique modular control system.

- Interchangeable covers to match fan to décor.
- Unique iris shutter prevents backdraughts.
- Red Dot Design Award winning design.

Part No.	Description	Flow Rate (l/sec)	Sound Pressure (dB(A))	Power Consumption (W)	Suitable Ducts (mm)	Dimensions (mm)
72683501	iCON 15 - 240V	19	30.3	8.8	100	197 x 197 x 40
72591601	iCON 30 - 240V	32	33.6	18	100	225 x 225 x 141
72591701	iCON 60 - 240V	75	42	63.1	150	280 x 280 x 165
72683701	iCON 15S eco - 12V	22	30.3	5.6	100	197 x 197 x 40
72683801	iCON 30S eco - 12V	34	33.6	7.7	100	225 x 225 x 141

Modules

Part No.	Description	Voltage (V)
72573602	Pull Cord	240
72612601	Timer	240
72687103	Humidity Timer with Pull Cord	240
72687104	Motion Sensor Timer	240
72687102	Motion Sensor Humidity Timer	240
72675702	Delayed Timer with Pull Cord	240
72675703	2 Speed Humidity Pull Cord	240

Part No.	Description	Voltage (V)
72573603	Pull Cord	12
72574204	Pull Cord with Timer	12
72574202	Humidity Timer with Pull Cord	12
72574203	Motion Sensor Timer	12
72574201	Motion Sensor Humidity Timer	12
72632307	Delayed Timer with Pull Cord	12

Covers

Colour	Part No. for iCON 15 / 15S Eco	Part No. for iCON 30 / 30S Eco	Part No. for iCON 60
Silver	52634504	52634507	52634510
Sandstone	52634505	52634508	52634511
Anthracite	52634503	52634506	52634509
Chrome	52634502	N/A	N/A



B Maxivent eco

- Axial fan - ideal for kitchens.

- Can be installed on walls and ceilings.

Part No.	Description	Flow Rate (l/sec)	Sound Pressure (dB(A))	Power Consumption (W)	Suitable Ducts (mm)	Dimensions (mm)
72678201	Maxivent eco 150P - Pull Cord	72	57	28	150	225 x 225 x 105
72678301	Maxivent eco 150T - Timer	72	57	28	150	225 x 225 x 105
72678401	Maxivent eco 150HP - Humidity Pull Cord	72	46 / 57	28	150	225 x 225 x 105

Domestic Ventilation



A



B

A Aria

- Entry level axial fan for toilets and bathrooms.
- Just 26 dB(A) and IPX4 rated.

Part No.	Description	Flow Rate (l/sec)	Sound Pressure (dB(A))	Power Consumption (W)	Suitable Ducts (mm)	Dimensions (mm)
90000687	Aria 100B – Basic	18.5	26	6.3	100	150 x 150 x 102
90000688	Aria 100T – Timer	18.5	26	6.3	100	150 x 150 x 102
90000689	Aria 100HT – Humidity Timer	18.5	26	6.3	100	150 x 150 x 102
90000690	Aria 100MST – Motion Sensor Timer	18.5	26	6.3	100	150 x 150 x 102

B iCONstant

- The quietest dMEV fan available – suitable for all rooms.
- Guaranteed constant volume feature (smart flow sensor).
- The only IPX5 dMEV fan for wall and ceiling installs.
- LED self-diagnostics and “fine tune” commissioning option of flow rate.

Part No.	Description	Flow Rate (l/sec)	Sound Pressure (dB(A))	Power Consumption (W)	Suitable Ducts (mm)	Dimensions (mm)
72687117	iCONstant - Timer	6/8 / 8/13 / 13/20	10/15 / 15/28 / 28/38	1.1/1.2 / 1.2/1.7 / 1.7/2.9	100	197 x 197 x 120
72687118	iCONstant - Humidity Timer	6/8 / 8/13 / 13/20	10/15 / 15/28 / 28/38	1.1/1.2 / 1.2/1.7 / 1.7/2.9	100	197 x 197 x 120

Training

Are you a Competent Ventilation Systems Installer?

Residential ventilation, from a toilet extract fan to a mechanical ventilation with heat recovery system, is ‘notifiable work’ under the latest Building Regulations and every new installation or refurbishment requiring a new electrical circuit should be inspected, commissioned, tested and signed off by a suitably qualified person.

Airflow operate the NICEIC approved Domestic Ventilation Systems installer training course which enables participants to demonstrate a high level of competency mapped against relevant National Occupational Standards and the latest Building Regulations affecting residential ventilation.

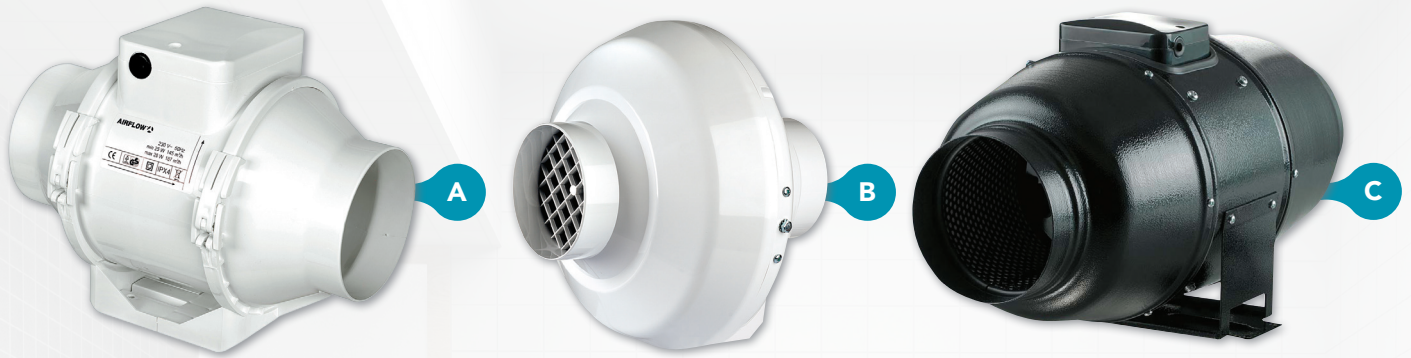
This two-day course comprises both practical “hands-on” system training and a written assessment following an introduction to relevant Building Regulations and supporting documents.

- Comprehensive two-day ventilation installer training to the latest Building Regulations.
- Benefits from a Nationally Recognised Qualification.
- Add credibility and opportunity to your business.
- Understand the use of the correct test equipment.
- Successful candidates eligible to join the Competent Persons Ventilation Installer Scheme.



For more information visit <https://www.airflow.com/niceic-ventilation-installer-training-scheme> or contact us on 01494 525252

In-Line Fans


A Aventa In-Line

- Powerful, in-line mixed flow fans.
- Ideal for bathrooms and kitchen installations.

- Can access motor and impeller without dismantling ductwork.

Part No.	Description	Flow Rate (l/sec)	Sound Pressure (dB(A))	Power Consumption (W)	Suitable Duct Diameter (mm)	Dimensions (mm)
9041085	Aventa 100B - Basic	40 / 52	27 / 36	21 / 33	100	190 x 246 x 126
9041086	Aventa 100T - Timer	40 / 52	27 / 36	21 / 33	100	190 x 246 x 126
9041087	Aventa 125B - Basic	66 / 88	28 / 37	23 / 37	125	190 x 246 x 126
9041088	Aventa 125T - Timer	66 / 88	28 / 37	23 / 37	125	190 x 246 x 126
9041089	Aventa 150B - Basic	112 / 144	33 / 44	30 / 60	150	250 x 295 x 185
9041090	Aventa 150T - Timer	112 / 144	33 / 44	30 / 60	150	250 x 295 x 185

B Aventa Turbo

- Powerful single speed in-line centrifugal fan.

- Ideal for light commercial premises.

Part No.	Description	Flow Rate (l/sec)	Sound Pressure (dB(A))	Power Consumption (W)	Suitable Duct Diameter (mm)	Dimensions (mm)
9041360	Aventa Turbo 100B – Basic	69	46	80	100	250 x 270 x 230
9041361	Aventa Turbo 125B – Basic	98	46	79	125	250 x 270 x 230
9041362	Aventa Turbo 150B – Basic	127	46	80	150	300 x 310 x 286
9041363	Aventa Turbo 200B – Basic	216	48	107	200	340 x 354 x 276
9041364	Aventa Turbo 250B – Basic	300	50	173	250	340 x 354 x 265
9041365	Aventa Turbo 315B – Basic	372	50	200	315	400 x 414 x 276

C Aventa Silent

- In-line mixed flow fan for commercial applications.

- Sound insulated casing ensures quiet operation.

Part No.	Description	Flow Rate (l/sec)	Sound Pressure (dB(A))	Power Consumption (W)	Suitable Duct Diameter (mm)	Dimensions (mm)
90000358	Aventa Silent 100B – Basic	47 / 67	24 / 29	24 / 26	100	237 x 505 x 243
90000359	Aventa Silent 125B – Basic	64 / 94	23 / 28	25 / 30	125	237 x 474 x 243
90000360	Aventa Silent 150B – Basic	112 / 154	26 / 33	45 / 52	150	260 x 580 x 274
90000361	Aventa Silent 200B – Basic	225 / 283	31 / 36	78 / 110	200	295 x 550 x 386

Aventa In-Line Shower Kits

- Timer fan with 6m flexible duct, ties, extract valve and grilles.
- Available with LED lamp.



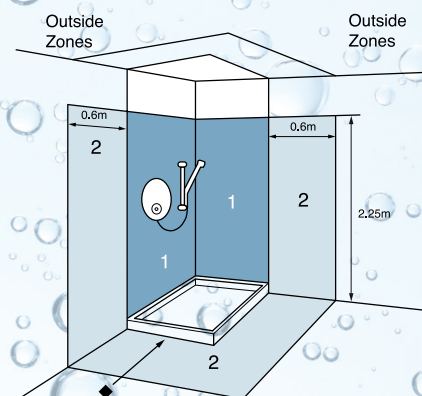
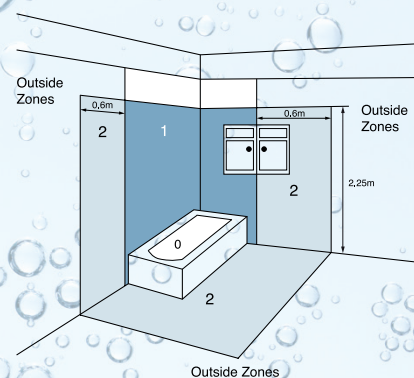
Part No.	Description	Contents of Kit
9041406	Aventa 125 Kit	Aventa 125T, 6m Flexible Ducting, Ties, Extract Valve and External Grille
9041407	Aventa 100 Kit	Aventa 100T, 6m Flexible Ducting, Ties, Extract Valve and External Grille
9041408	Aventa 100 Kit	Aventa 100T, 6m Flexible Ducting, Ties, LED Lamp, Chrome and White Grilles and External Grille

What Fan Where?

Selection Guide

Suitable
 Not suitable

FAN TYPE	Toilet	En-Suite / Bathroom	Utility Room	Kitchen
iCON 15	<input checked="" type="radio"/>	Above fixed shower in Zone 1 or 2 /Outside Zones	—	—
iCON 15 SELV	<input checked="" type="radio"/>	Above fixed shower in Zone 1 or 2 /Outside Zones	—	—
iCON 30	—	Above fixed shower in Zone 1 or 2 /Outside Zones	<input checked="" type="radio"/>	—
iCON 30 SELV	—	Zones 1 or 2	<input checked="" type="radio"/>	—
iCON 60	—	—	<input checked="" type="radio"/>	<input checked="" type="radio"/>
QuietAir QT 100	<input checked="" type="radio"/>	Zones 1 or 2	—	—
QuietAir QT 120	—	Zones 1 or 2	<input checked="" type="radio"/>	<input checked="" type="radio"/> (adjacent to hob)
QuietAir QT 150	—	—	<input checked="" type="radio"/>	<input checked="" type="radio"/>
LOOVENT eco	<input checked="" type="radio"/>	Zones 1 or 2	<input checked="" type="radio"/>	<input checked="" type="radio"/> (adjacent to hob)
Maxivent eco	—	—	<input checked="" type="radio"/>	<input checked="" type="radio"/>
iCONstant	<input checked="" type="radio"/>	Zones 1 or 2	<input checked="" type="radio"/>	<input checked="" type="radio"/>
Aura Smart	<input checked="" type="radio"/>	Outside Zones	—	—
Aventa In-Line	<input checked="" type="radio"/>	<input checked="" type="radio"/>	<input checked="" type="radio"/>	<input checked="" type="radio"/>



Hand Dryers



A ecoDRY

- Low energy hand dryers.
- Very quick drying time.

Part No.	Description	Air flow (l/sec)	Sound Pressure (dB(A))	Power Consumption (W)	Drying Time (sec)	Dimensions (mm)
90000242	ecoDRY 550 – White ABS	35	68	550	10-15	285 x 221 x 157
90000243	ecoDRY 550 – Satin Chrome	35	68	550	10-15	285 x 221 x 157
90000518	ecoDRY 1100 – White ABS	52	75	1100	10-15	285 x 221 x 157
90000519	ecoDRY 1100 – Satin Chrome	52	75	1100	10-15	285 x 221 x 157

B ecoDRY mini

- Smallest hand dryer in its class.
- Automatic sensor operated.

Part No.	Description	Air flow (l/sec)	Sound Pressure (dB(A))	Power Consumption (W)	Drying Time (sec)	Dimensions (mm)
90000520	ecoDRY mini – White ABS	31	70	900	20	238 x 156 x 99.5
90000521	ecoDRY mini – Satin Chrome	31	70	900	20	238 x 156 x 99.5

Accessories

Switches and Controllers



90000539



90000540



90000541



90000543



90000547

Part No.	Description	Suitable for
90000539	On/Off Switch with Red Neon Power on Indicator and Fuse	iCON, QuietAir, Maxivent, Aventa In-Line, Aventa Turbo, Aventa Silent
90000540	On/Off Switch with Fan Running Symbol	Aventa In-Line, Aventa Turbo, Aventa Silent
90000541	Low/High/Off Switch with Low and High Speed Running Symbols	iCON, QuietAir, Maxivent
90000543	On/Off Switch with Fan Running Symbol and Green Neon Fan Activated Indicator	iCON, QuietAir, Maxivent, Aventa In-Line, Aventa Turbo, Aventa Silent
90000547	On/Off Switch with Fan Running Symbol and Lockable Isolator	iCON, QuietAir, Maxivent

Rigid Ducting Kits



iCON Round Grilles



Part No.	Description
72643601	3m x 100mm Flexible Ducting with Square Grille – Terracotta
72643602	3m x 100mm Flexible Ducting with Square Grille – White
72643603	3m x 150mm Flexible Ducting with Square Grille – Terracotta
72643604	3m x 150mm Flexible Ducting with Square Grille – White

Part No.	Description
72643201	100mm x 350mm Rigid Ducting with Terracotta Round Grille
72643202	100mm x 350mm Rigid Ducting with White Round Grille
72643203	150mm x 350mm Rigid Ducting with Terracotta Round Grille
72643204	150mm x 350mm Rigid Ducting with White Round Grille
9021451	100mm x 330mm Rigid Ducting with Cowl and Rubber Seal

Part No.	Description
72596201	100mm Diameter Terracotta Round Grille
72596202	100mm Diameter White Round Grille
72593101	150mm Diameter Terracotta Round Grille
72593102	150mm Diameter White Round Grille

Training

Air Academy & Technology Centre

Airflow Developments is proud to announce that our state-of-the-art Air Academy technology, training facility and gallery is now open in High Wycombe.

Air Academy is more than just a showroom, it is a working air technology centre and also an elite training facility that is able to offer CIBSE and RIBA approved CPD seminars and the NICEIC Ventilation Installer Training Scheme.

Visiting the Air Academy is **FREE**, to arrange contact Airflow on:

+44 (0)1494 525252 or
e-mail info@airflow.com

