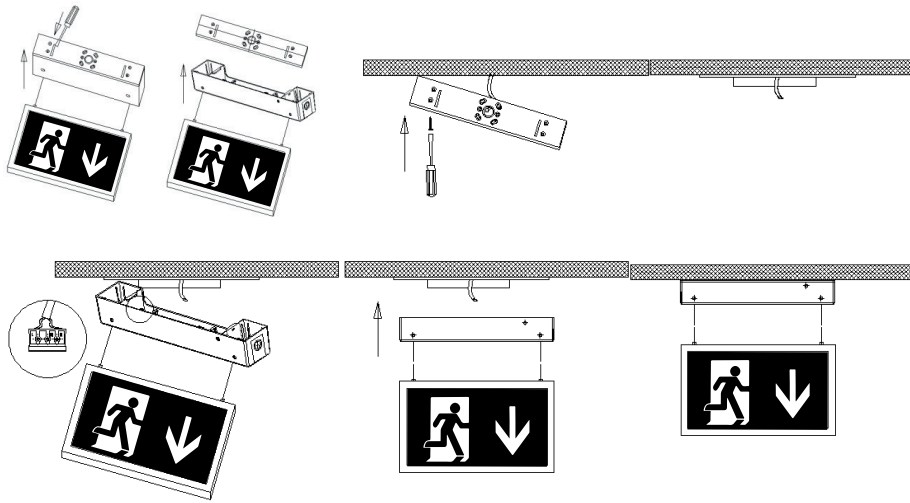


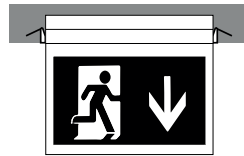
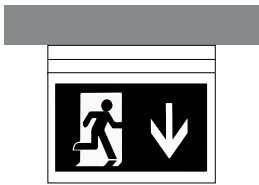
# Installation Instructions Emergency Exit Blade

PRODUCT CODE: 38875



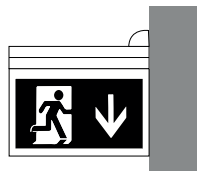
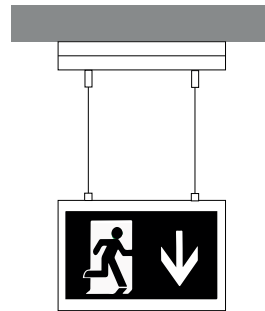
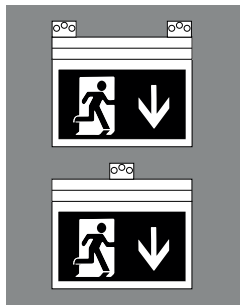
Flush Ceiling Mounting

Recessed Ceiling Mounting



Wall Mounting

Suspension Mounting

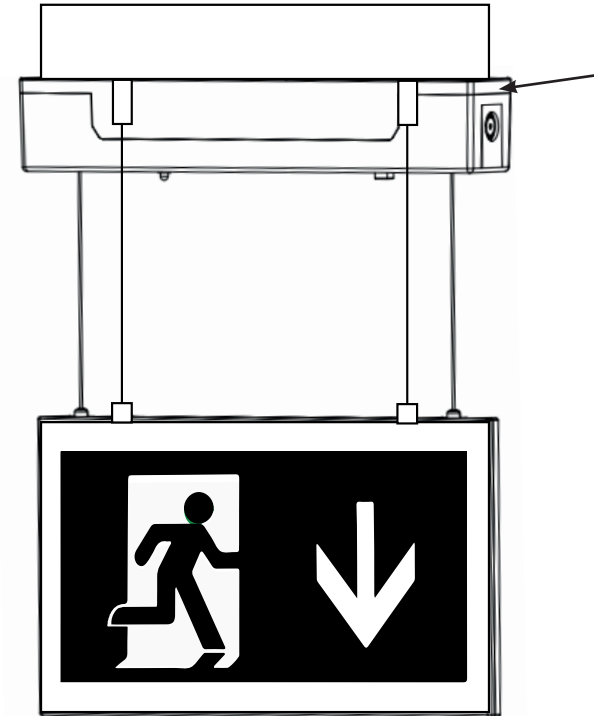


# DISASSEMBLY INSTRUCTIONS

## Product end of life instruction.

This Lighting product is in the scope of EU 2019/2020 directive on Waste Electrical and Electronic Equipment (WEEE). This product must be disposed of, according to the legislation. This document is intended for use by end of life recyclers or treatment facilities. It provides the basic information to assure an appropriate end of life treatment for the components and materials of the product.

Please follow pictured diagram on the back of this manual showing how to dismantle the product into different components which should be disposed correctly. These components would consist of plastic, metal and electronic materials.



ELECTRALITE

PRODUCT CODE: ELA 38875  
 INPUT VOLTAGE: AC220 - 240V ~ 50/60Hz  
 TOTAL POWER: 4W  
 BATTERY: Ni-Cd 3.6V 800mAh  
 EMERGENCY DURATION: 3 HOURS  
 CHL, GORSE MILL, OL9 9RJ, UK  
 EU Authorised Representative: Authorised rep Compliance,  
 Ground Floor, 71 Lower Baggot Street, Dublin, Ireland, D02P593





# ELECTRALITE

## GENERAL INSTRUCTIONS:

These instructions should be read carefully and retained after installation by the end user for future reference and maintenance

These instructions should be used to aid installation of the following product:  
**ELA 38875**

## SAFETY:

- Installation of this luminaire should only be carried out by a qualified electrician or competent person to the latest Building and current IEE Wiring Regulations [BS7671]
- Please isolate mains prior to installation/maintenance
- Check the total load on the circuit [including when this luminaire is fitted] does not exceed the rating of the circuit cable, fuse or circuit breaker
- Please note the IP Ingress of Protection rating of this luminaire when deciding the location for installation
- Installing in areas where the temperature consistently drops below 0 °C may shorten the battery Life /duration
- This product is Class II and insulated
- This product is non-dimmable
- This product is IP20 rated
- Identify the location and direction of any hidden supply cables or service pipes before drilling fixing holes.

## GENERAL:

The LED Lamps fitted in this product are non-replaceable. The product should be recycled in the correct manner when it reaches the end of its life. Check local authorities for where facilities exist.

If the batteries have been left in a discharged state for a long period of time we recommend that it be charged and discharged. through several cycles, which should restore the battery to its full capacity.

The batteries in this product are Nickel Cadmium and must be disposed of correctly. Please contact the local authorities for the disposal of this toxic waste.

Clean with a soft dry cloth only, do not use aggressive cleaning products or solvents which may damage the product.

## Helpline

If you receive this item with parts broken or missing, please telephone: **0333 0050077**

Please have ready your name, address, tel. no., product reference, where purchased and parts required. An answering service is in operation outside office hours and during busy periods.

**We regret that we are unable to give advice on internal house wiring.**

Cascade Holdings Ltd, Gorse Mill, Gorse Street, Chadderton, Oldham. OL9 9RJ

EU Authorised Representative: Authorised Rep Compliance,  
Ground Floor, 71 Lower Baggot Street, Dublin, Ireland,  
D02P593



This product should be disposed of responsibly at the end of its life. Please recycle where facilities exist. Check with your Local Authority or retailer for recycling advice (Waste Electrical and Electronic Equipment Directive)