

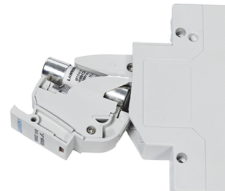


LFPV-32

Solar DC Fuse



PART OF



+44 (0) 1661 8644000



sales@lawsonfuses.com



www.lawson-fuses.com



lawson-fuses-limited

SOLAR DC FUSE

TYPE LFPV-32

Type LFPV-32 Solar DC Fuse complying with IEC 60269-1 & IEC 60269-6

Rated voltages: DC 1000V, Rated current: 1-32A, Breaking Capacity: DC 20kA, Utilisation Category gPV for solar protection



Lawson Type LFPV-32 Solar DC Fuses are a range of 10 x 38 mm fuse-links specifically designed for protecting photovoltaic strings.

These fuse-links are capable of interrupting low overcurrents associated with faulted photovoltaic string arrays (reverse current, multi-array fault.)



SPECIFICATIONS

Pole	1P
Rated Voltage (Vdc)	1000
Rated Current (A)	1,2,3,4,5,6,8,10,12,15,20,25,32
Maximum Block Capability (kA)	20
Maximum Power Dissipation (W)	3.5

CONNECTIONS AND INSTALLATIONS

Connection (mm ²)	2.5 to 10mm ²
Working Temperature (°C)	~ -30 + 70
Altitude (m)	≤ 2000
Relative Humidity	≤ 95%
Protection class/degree	IP20
Installation Environment	No obvious shock and vibration
Installation class/type	Class III / DIN rail

SIZE (mm)

(W x H x L)	W	18
	H	79
	L	62
Fuse Size		10 x 38
Fuse-Link Weight (kg)		0.011
Fuse holder weight (kg)		0.07

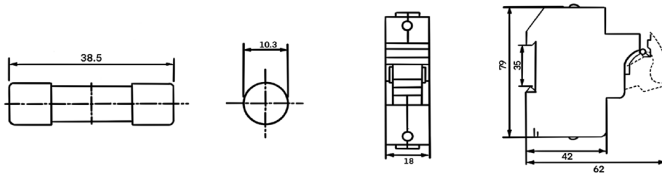
SOLAR DC FUSE

TYPE LPFV-32

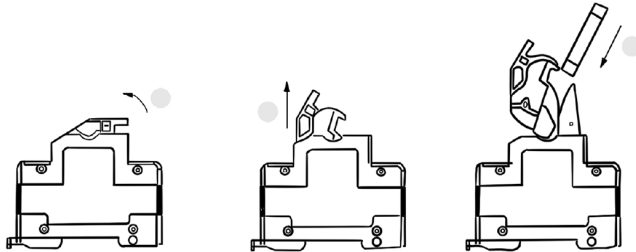
Type LPFV-32 Solar DC Fuse complying with IEC 60269-1 & IEC 60269-6

Rated voltages: DC 1000V, Rated current: 1-32A, Breaking Capacity: DC 20kA, Utilisation Category gPV for solar protection

DIMENSIONS



INSTALLATIONS



CHARACTERISTIC CURVE

