

GLEDOPTO[®]

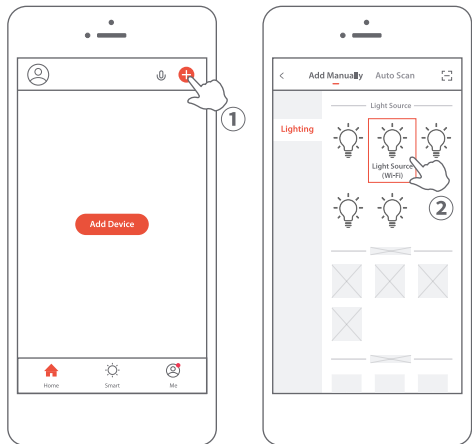
WIFI CONTROLLER

User instruction

PAIRING PROCESS

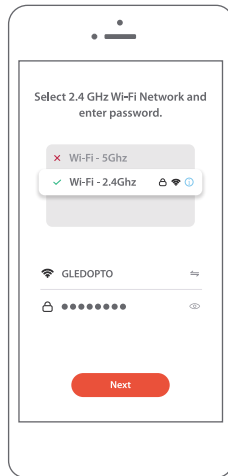
Mobile phone pair with 2.4GHz Wi-Fi network

1. Turn on "SmartLife" App on your phone to manually add the Wi-Fi device.



Check if the device has been reset and the light strip is blinking quickly.

2. Enter the password to connect with the 2.4 GHz Wi-Fi network of your router.



Check if it is 2.4GHz Wi-Fi.

3. Adding/searching device.



If success pairing, there will be "GLEDOPTO LIGHT" displayed on the App.

RESET

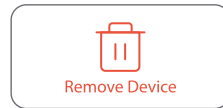
Method 1

Power off and power on the device for 5 times, the light should turn to be cold white and slow flashing to indicate successfully RESET.



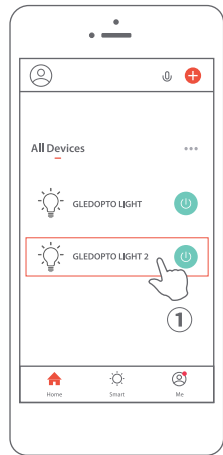
Method 2

Delete the device on the App, the light should turn to be cold white and slow flashing to indicate successfully RESET.

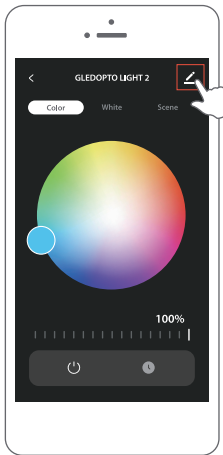


GROUP CONTROL

1. Click any device to enter the adjust table, and select the top right corner icon to enter the edit table.

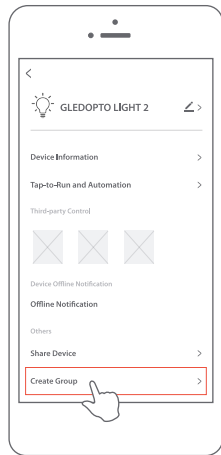


1

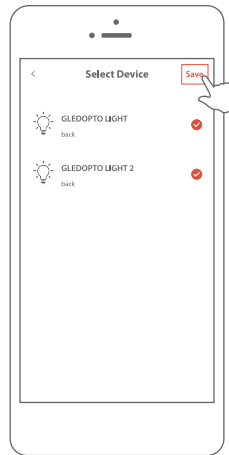


2. Click "Create Group" and select the device you want to add.

3. Click "Save", then edit a group name and tap "Confirm" to save the name.



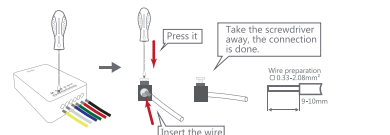
2



3

WIRING DIAGRAM

WiFi Controller:



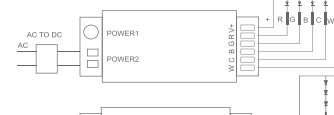
RGB



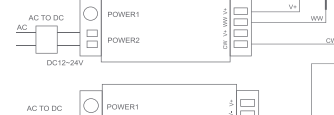
RGBW



RGB CCT



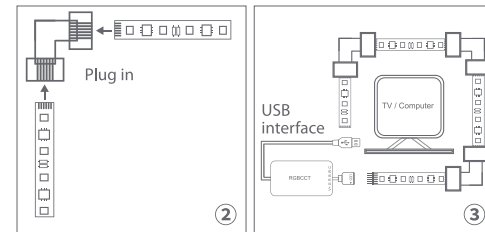
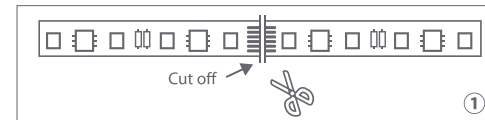
WW/CW



DIMMER



WiFi Mini Controller:



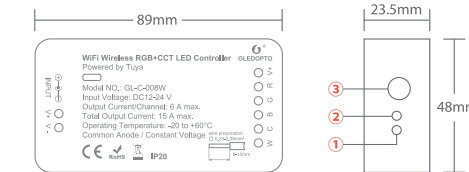
① Cut the LED strip light along the cutting line.

② Insert the cut LED strip light into the connector.

③ Now you can enjoy your smart lighting life.

TECHNICAL DATA

Picture		
Size	23.5x48x89mm	11x22x43mm
Input Voltage	DC 12-24V	DC 5V
Output Current	6A max	1A max
Total Output Current	15A max	2A max
Operating Temperature	-20 to +60°C	
Common Anode		
Constant Voltage		



Two types of connections:

①② : V+, V- power interface / ③ : 5.5x2.1mm DC Socket

EC	REP	LED-Trading Tobias Ebert Schoeneicher Str.42, Schoeneiche b. Berlin, Germany, 15566 0049 30 641 689 17 info@led-trading.de
----	-----	--